

HASKETT LIBRARY SELF-GUIDED TOUR

A. ENTRANCE LOBBY

return materials
and view community
information

B. COMMUNITY ROOM

for special programs and
community group activities

C. CIRCULATION DESK

check out materials or
sign up for a library card

D. BROWSING AREA

browse new materials or
find what you're looking for
on the library catalog terminals

E. TEEN SPACE

is a place just for Teens,
with lots of comfortable
study space and computers

F. INFORMATION DESK & ADULT SERVICES

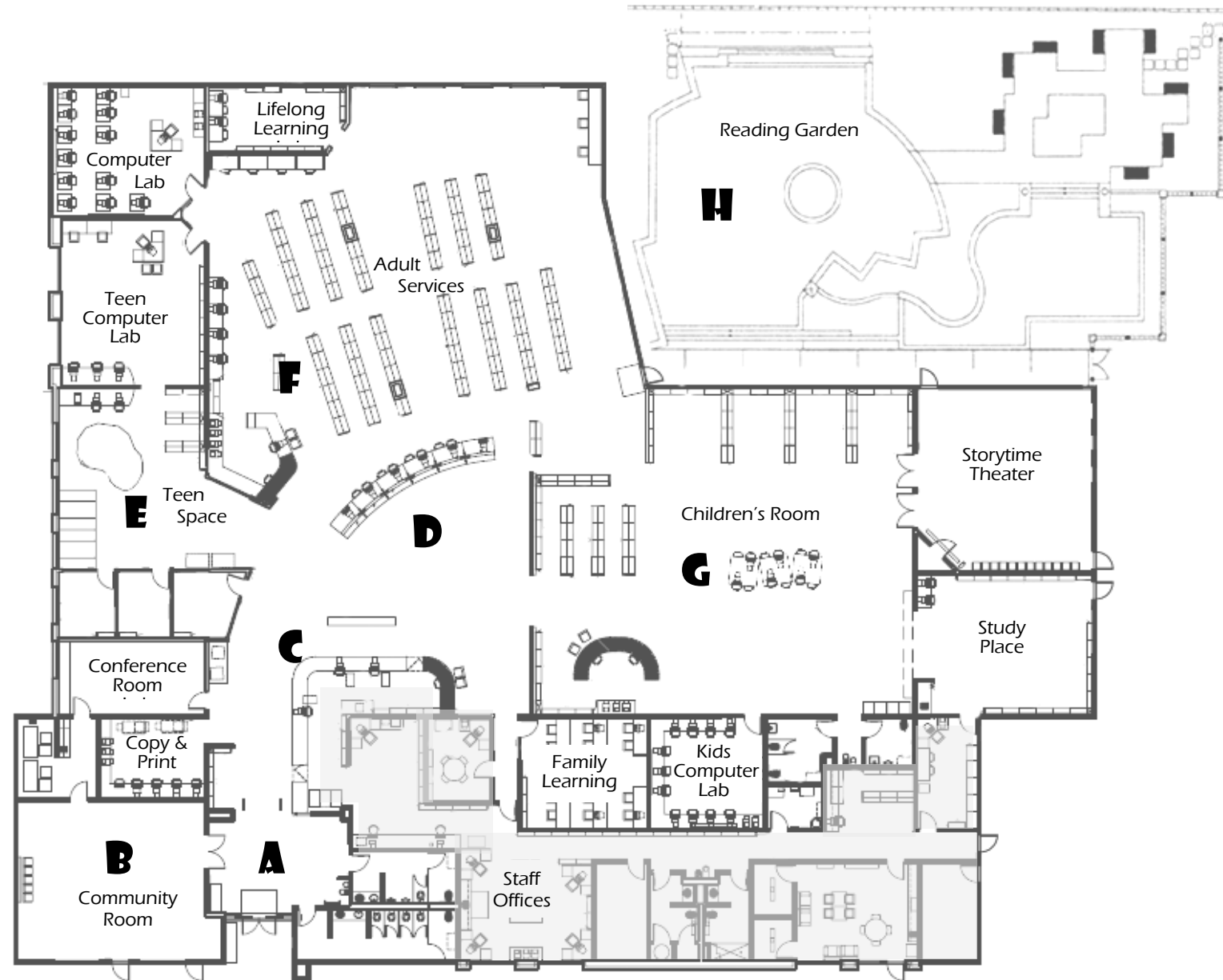
includes reference resources,
magazines, computer lab,
browsing and comfortable
reading areas

G. CHILDREN'S ROOM

with a special storytime
theater, homework and
craft room, computer lab
and special collections
just for kids and families

H. THE READING GARDEN

is the focal point of the new space and creates enjoyable views throughout the library.
It is also a great place to relax with a good book or enjoy a library program, with many large shade trees and seating areas.

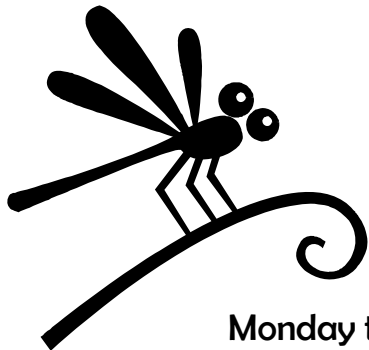


THE ORIGINAL LIBRARY . . .

- ❖ On April 12, 1960, Anaheim residents approved a Capital Improvement Bond Issue which funded the City's first branch library (Haskett)
- ❖ The Elva L. Haskett Branch Library was dedicated on August 26, 1962, named in honor of the City's first Children's Librarian.
- ❖ The original building was 7,534 square feet, with 15,000 books and cost approximately \$170,000.
- ❖ 1,305 items circulated on the first official day of service.
- ❖ The original library was demolished in September 2004.

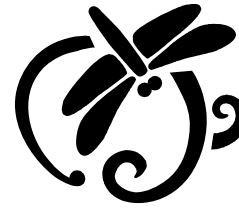
LIFE IN ANAHEIM . . . THEN & NOW

	1962	2006
Population	113,555	345,000
Size of City	25.96 sq miles	50.37 sq miles
Housing Units	35,044	99,719
Median house price	\$ 16,010	\$ 627,500
Gas prices	.28¢	\$ 3.30



Haskett Library
 2650 West Broadway
 Anaheim, CA · 92804
714-765-5075

Monday through Thursday: 10am to 9pm
 Friday & Saturday: Noon to 6pm



FUN FACTS ABOUT HASKETT LIBRARY

THE HASKETT LIBRARY . . . OLD & NEW

	2004	2006
Building Size	7,534 sq feet	23,673 sq feet
Collection Size	50,000	75,000
Hours Open	51 per week	61 per week
Seats in Library	98	259
Public Computers	44	103

The new library has separate spaces designed especially for adults, teens, tweens, children, and families, including:

- a storytelling theater
- a shaded reading garden
- computer labs for kids, teens and adults
- a study space for middle schoolers
- an arts & crafts room
- group study rooms
- community meeting rooms
- a spanish language area
- and a Family Learning Center

